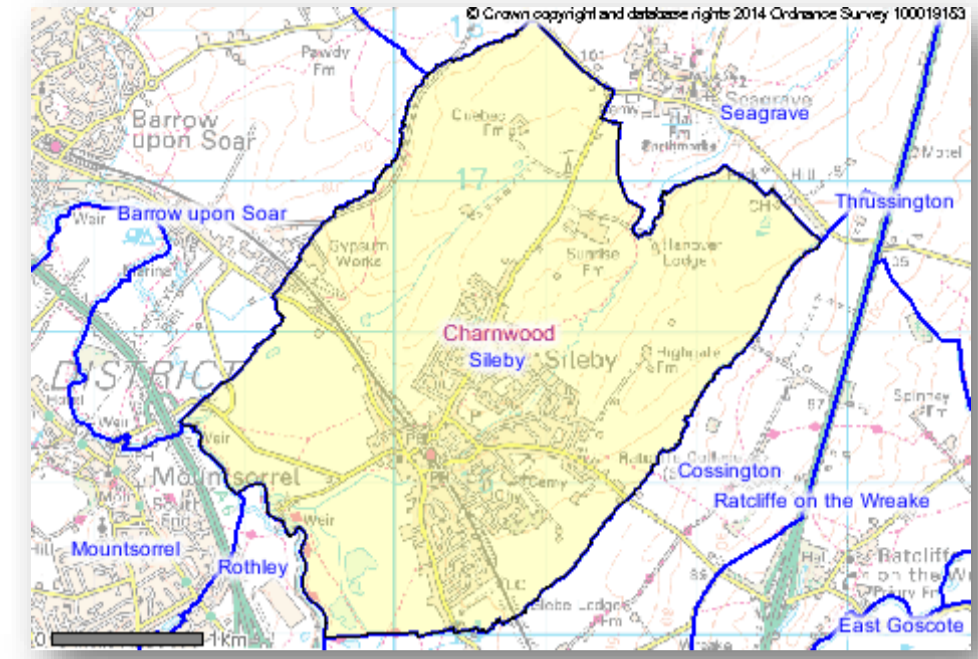


## Sileby Parish Census 2011 Profile

This Parish Profile presents data from the 2011 Census which took place on 27th March 2011.

It provides comparisons against the borough, region and England averages.



	Sileby		Charnwood	East Midlands	England
	No	%	%	%	%
<b>USUAL RESIDENTS BY AGE BAND</b>					
Aged 0-4	517	6.6	5.5	6.0	6.3
Aged 5-15	967	12.3	11.5	12.5	12.6
Aged 16-64	5,273	67.3	66.6	64.5	64.8
Aged 65+	1,078	13.8	16.4	17.1	16.3
All Usual Residents	7,835	100.0	100.0	100.0	100.0
<b>ETHNIC GROUP</b>					
White	7,618	97.2	87.4	89.3	85.4
Mixed/Multiple Ethnic groups	75	1.0	1.6	1.9	2.3
Asian	114	1.5	9.7	6.5	7.8
Black	14	0.2	0.8	1.8	3.5
Other Ethnic Groups	14	0.2	0.6	0.6	1.0
All Usual Residents	7,835	100.0	100.0	100.0	100.0
<b>RELIGION</b>					
Christian	4,541	58.0	55.5	58.8	59.4
Buddhist	14	0.2	0.3	0.3	0.5
Hindu	57	0.7	5.0	2.0	1.5
Jewish	6	0.1	0.1	0.1	0.5
Muslim	26	0.3	2.4	3.1	5.0
Sikh	6	0.1	0.7	1.0	0.8
Other Religion	32	0.4	0.4	0.4	0.4
No Religion	2,591	33.1	29.2	27.5	24.7
Religion Not Stated	562	7.2	6.3	6.8	7.2
All Usual Residents	7,835	100.0	100.0	100.0	100.0
<b>HIGHEST LEVEL OF QUALIFICATION</b>					
No Qualifications	1,451	22.8	20.5	24.7	22.5
Level 1 Qualifications	972	15.3	12.1	13.9	13.3
Level 2 Qualifications	1,071	16.9	14.3	15.6	15.2
Apprenticeship	347	5.5	4.8	4.0	3.6
Level 3 Qualifications	901	14.2	17.0	12.9	12.4
Level 4 Qualifications and Above	1,353	21.3	26.8	23.6	27.4
Other Qualifications	256	4.0	4.5	5.3	5.7
All Usual Residents Aged 16 and Over	6,351	100.0	100.0	100.0	100.0
<b>ECONOMIC ACTIVITY &amp; INACTIVITY</b>					
All Usual Residents Aged 16 to 74	5,841	100.0	100.0	100.0	100.0
<b>Economically Active Total</b>	<b>4,471</b>	<b>76.5</b>	<b>67.7</b>	69.3	69.9
Employee, Full-time	2,747	47.0	38.1	38.8	38.6
Employee, Part-time	863	14.8	13.8	14.4	13.7
Self Employed	498	8.5	6.4	8.7	9.8
Unemployed	216	3.7	3.1	4.2	4.4
Full-time Student (economically active)	147	2.5	4.4	3.3	3.4
<b>Economically inactive Total</b>	<b>1,370</b>	<b>23.5</b>	<b>32.3</b>	30.7	30.1
Retired	686	11.7	13.7	15.0	13.7
Student (including Full-Time Students)	227	3.9	11.4	5.8	5.8
Looking After Home or Family	202	3.5	3.1	4.0	4.4
Long-Term Sick or Disabled	181	3.1	2.8	4.1	4.0
Other	74	1.3	1.3	1.9	2.2

	Sileby		Charnwood	East Midlands	England
	No	%	%	%	%
<b>METHOD OF TRAVEL TO WORK</b>					
Work Mainly at or From Home	140	2.4	3.2	3.3	3.5
Underground, Metro, Light Rail, Tram	2	0.0	0.1	0.2	2.6
Train	128	2.2	1.0	0.9	3.5
Bus, Minibus or Coach	216	3.7	3.2	4.0	4.9
Taxi	2	0.0	0.1	0.3	0.3
Motorcycle, Scooter or Moped	50	0.9	0.5	0.5	0.5
Driving a Car or Van	3,085	52.8	42.9	42.2	36.9
Passenger in a Car or Van	193	3.3	3.2	3.9	3.3
Bicycle	91	1.6	2.4	1.8	1.9
On Foot	297	5.1	6.9	7.1	6.9
Other Method of Travel to Work	20	0.3	0.3	0.3	0.4
Not in Employment	1,617	27.7	36.3	35.7	35.3
All Usual Residents Aged 16 to 74	5,841	100.0	100.0	100.0	100.0
<b>HEALTH</b>					
Very Good Health	3,652	46.6	48.1	45.3	47.2
Good Health	2,880	36.8	35.3	35.1	34.2
Fair Health	983	12.5	12.4	14.0	13.1
Bad Health	264	3.4	3.3	4.3	4.2
Very Bad Health	56	0.7	0.9	1.2	1.2
All Usual Residents	7,835	100.0	100.0	100.0	100.0
<b>Long-Term Health Problem or Disability</b>					
Day-to-Day Activities Limited a Lot	526	6.7	6.7	8.7	8.3
Day-to-Day Activities Limited a Little	676	8.6	8.9	9.9	9.3
Day-to-Day Activities Not Limited	6,633	84.7	84.4	81.4	82.4
All Usual Residents	7,835	100.0	100.0	100.0	100.0
<b>Provision of Unpaid Care</b>					
Provides No Unpaid Care	7,031	89.7	89.7	89.2	89.8
Provides 1 to 19 Hours Unpaid Care a Week	573	7.3	7.2	6.9	6.5
Provides 20 to 49 Hours Unpaid Care a Week	86	1.1	1.1	1.4	1.4
Provides 50 or More Hours Unpaid Care a Week	145	1.9	2.0	2.5	2.4
All Usual Residents	7,835	100.0	100.0	100.0	100.0
<b>HOUSEHOLDS AND HOUSEHOLD SPACES</b>					
All Household Spaces	3,390	100.0	100.0	100.0	100.0
Household Spaces With At Least One Usual Resident	3,279	96.7	96.0	96.0	95.7
Household Spaces With No Usual Residents (empty homes)	111	3.3	4.0	4.0	4.3
<b>COMMUNAL ESTABLISHMENTS</b>					
Number of communal establishments	13				
All usual residents in communal establishments	81				
<b>TENURE</b>					
All occupied Households	3,279	100.0	100.0	100.0	100.0
Owned; Owned Outright	1,038	31.7	35.7	32.8	30.6
Owned; Owned with a Mortgage or Loan	1,463	44.6	36.4	34.5	32.8
Shared Ownership (Part Owned and Part Rented)	9	0.3	0.8	0.7	0.8
Social Rented; Rented from Council (Local Authority)	271	8.3	8.0	10.1	9.4
Social Rented; Other	35	1.1	3.8	5.7	8.3
Private Rented; Private Landlord or Letting Agency	396	12.1	12.9	13.6	15.4
Private Rented; Other	39	1.2	1.2	1.3	1.4
Living Rent Free	28	0.9	1.2	1.3	1.3
<b>ACCOMMODATION TYPE</b>					
All household spaces (occupied + vacant)	3,390	100.0	100.0	100.0	100.0
Detached	687	20.3	30.3	32.2	22.3
Semi-Detached	1,443	42.6	38.5	35.1	30.7
Terraced	937	27.6	18.7	20.6	24.5
Flat, Maisonette or Apartment	304	9.0	12.0	11.7	22.1
Caravan or Other Mobile or Temporary Structure	-	0.0	0.0	0.4	0.4
<b>NUMBER OF BEDROOMS</b>					
All Household Spaces With At Least One Usual Resident	3,279	100.0	100.0	100.0	100.0
No Bedrooms	3	0.1	0.2	0.2	0.2
1 Bedroom	192	5.9	8.4	8.1	11.8
2 Bedrooms	1,042	31.8	24.0	26.5	27.9
3 Bedrooms	1,603	48.9	44.2	45.4	41.2
4 Bedrooms	350	10.7	17.5	15.4	14.4
5 or More Bedrooms	89	2.7	5.7	4.4	4.6

	Sileby		Charnwood	East Midlands	England
	No	%	%	%	%
<b>DEPRIVATION</b>					
All occupied Households	3,279	100.0	100.0	100.0	100.0
Household is Not Deprived in Any Dimension	1,625	49.6	48.9	42.8	42.5
Household is Deprived in 1 Dimension	1,021	31.1	31.3	32.4	32.7
Household is Deprived in 2 Dimensions	514	15.7	16.2	19.6	19.1
Household is Deprived in 3 Dimensions	110	3.4	3.3	4.8	5.1
Household is Deprived in 4 Dimensions	9	0.3	0.3	0.4	0.5
<b>HOUSEHOLD SIZE</b>					
All Household Spaces With At Least One Usual Resident	3,279	100.0	100.0	100.0	100.0
1 Person in Household	894	27.3	28.1	29.0	30.2
2 People in Household	1,196	36.5	35.5	36.2	34.2
3 People in Household	545	16.6	15.8	15.6	15.6
4 People in Household	451	13.8	14.0	12.9	13.0
5 People in Household	140	4.3	4.6	4.3	4.7
6 People in Household	45	1.4	1.5	1.4	1.7
7 People in Household	6	0.2	0.3	0.3	0.4
8 or More People in Household	2	0.1	0.2	0.2	0.3
<b>CAR OR VAN AVAILABILITY</b>					
All occupied Households	3,279	100.0	100.0	100.0	100.0
No Cars or Vans in Household	476	14.5	18.1	22.1	25.8
1 Car or Van in Household	1,452	44.3	42.6	42.5	42.2
2 Cars or Vans in Household	1,060	32.3	30.2	27.4	24.7
3 Cars or Vans in Household	206	6.3	6.8	6.0	5.5
4 or More Cars or Vans in Household	85	2.6	2.3	2.0	1.9
All Cars or Vans in Area	4,562				

Source: Office for National Statistics licensed under the Open Government Licence v.3.0.

The data in this profile is derived from the following tables c/o Office for National Statistics Neighbourhood Statistics website and is subject to Crown Copyright.

Economic Activity, 2011 (QS601EW); Tenure, 2011 (KS402EW); Religion, 2011 (KS209EW); Accommodation Type - Households, 2011 (QS402EW); Number of Bedrooms, 2011 (QS411EW); Provision of Unpaid Care, 2011 (QS301EW); Households by Deprivation Dimensions, 2011 (QS119EW); Age Structure, 2011 (KS102EW); Tenure - Households, 2011 (QS405EW); Household Size, 2011 (QS406EW); Ethnic Group, 2011 (QS201EW); Long-Term Health Problem or Disability, 2011 (QS303EW); Car or Van Availability, 2011 (QS416EW); Method of Travel to Work, 2011 (QS701EW); Household Spaces, 2011 (QS417EW); Dwellings, Household Spaces and Accommodation Type, 2011 (KS401EW); General Health, 2011 (QS302EW); Highest Level of Qualification, 2011 (QS501EW)